

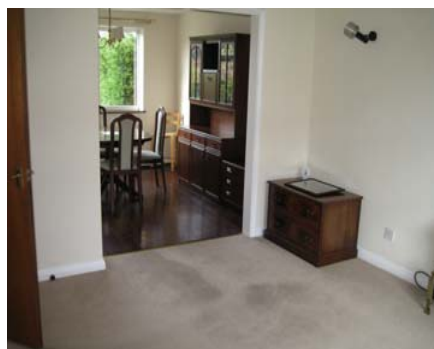
The property is entered through a hardwood entrance door with glazed side window, opens into ...

Entrance Hallway

Has staircase to the first floor with storage cupboard beneath housing the boiler. Central heating radiator.

Lounge 10'7" x 14'

With neutral décor and carpeting, there is a front facing upvc double glazed window, central heating radiator.



Dining Room 11'8" x 8'

A separate dining room, ideal for family use. There is parquet wooden flooring, plain neutral décor, rear facing upvc double glazed window. Central heating radiator.

Kitchen 11'2" x 7'8"

Furnished with a range of base and wall cabinets in a light oak finish, co-ordinating worktops and neutral wall tiling. One and half inset sink with matching mixer taps, above which is a side facing upvc double glazed window. Plumbing for an automatic washing machine, and a dishwasher. Space and



point for a tumble dryer. Space for a cooker, with both gas connection and electric socket. A recess provides the ideal space for a fridge/freezer. Rear upvc access door and window at its side. Vinyl flooring.

First Floor Landing

Has access into the loft space, side facing upvc double glazed window.

Bedroom 1 13'6" x 8'2" (this 2nd measurement has not been taken into the wardrobes)

This master double bedroom benefits from an extensive range of wardrobes with mirrored fronts, built to one wall and providing a whole wealth of storage. Front facing upvc double glazed window, central heating radiator beneath. Airing cupboard with storage shelf.



Bedroom 2 10'5" x 10' (this 2nd measurement has not been taken into the wardrobes)

Another double bedroom, with a range of wardrobes built in to one wall, and having mirrored fronts. Rear facing upvc double glazed window, central heating radiator beneath.

Bedroom 3 6'6" x 10'9" (overall)

A single room with fitted wall cabinets, and an over stairs cupboard. Front facing upvc double glazed window, central heating radiator.



Bathroom 7' x 6'3"

Part tiled and furnished with a soft rose suite comprising panelled bath with twin hand grips, mixer taps with shower handset, shower rail. Pedestal wash basin with chrome taps, low flush w.c. Rear facing obscure upvc double glazed window. Central heating radiator.

Exterior & Gardens

Gardens to both front and rear, where there is also a timber shed. Driveway and car port.